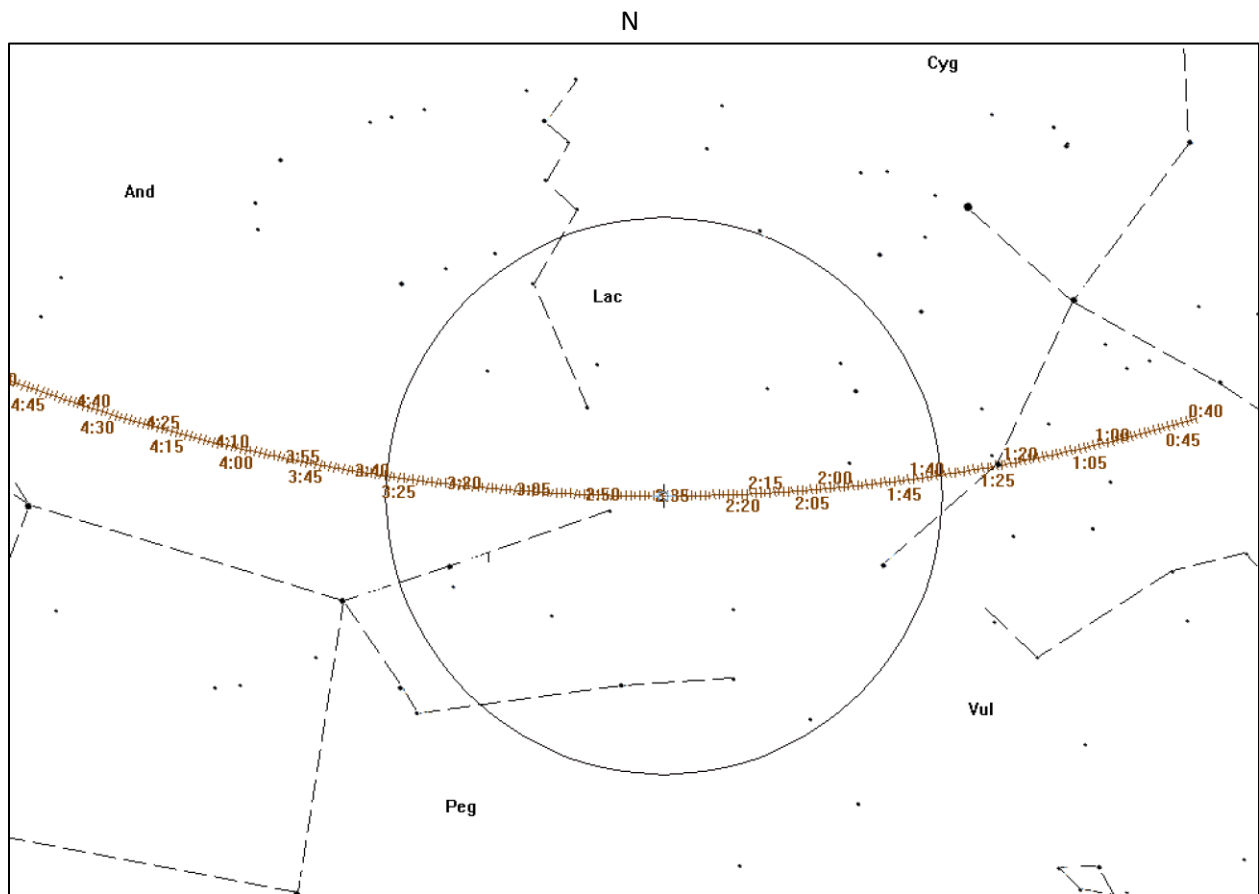


For the Central Time Zone

				Prepoint star near 10PM local				Prepoint star near 11PM local			
Lng W	Lat N	Alt	Az	UT	Local	SAO	chart	UT	Local	SAO	Chart
Central Time Zone											
90	41 19 44	65	97	2:42:55.0	21:42:55.0	72069	Chart 2	3:53:59.0	22:42:55.0	73184	Chart 3
95	40 4 34	61	91	2:42:33.5	21:42:33.5	72069	Chart 2	3:53:37.5	22:40:37.5	73184	Chart 3
100	38 36 17	57	85	2:42:11.9	21:42:11.9	72069	Chart 2	3:53:15.9	22:38:15.9	73184	Chart 3

All charts are plotted with North up. The lines with time and tic marks at 1 minute interval is the prepoint line for 90W 41°19'44"N on the overview and Chart 3. For Chart 2, it is for 75W 43°51'08"N.



This shows a wide field view of the star field. 90W 41°19'44"N. This is centered on 2:40 UT, which is 21:40 EDT. Please ignore the circle. This is a feature of Guide 9 on every chart we have not been able to disable.

Chart 2 shows a prepointing excerpt for the location at 75W 43°51'08"N on September 12. This can be used on Sept 11 as is for all the Central time zone for the purpose of determining whether the observer equipment is able to record the event, is the chosen site suitable, and give the observer practice in finding targets similar to the star to be occulted by Interamnia.

Observers can get the time these stars will be at their closest to the prepoint line from their location by doing the following:

Use Occult Watcher to find the time of the occultation as well as the altitude and azimuth of the event for their location. The Occult program could also be used.

For Chart 2 (SAO 72069) Subtract 7h34m09s from the predicted time for the occultation by Interamnia.

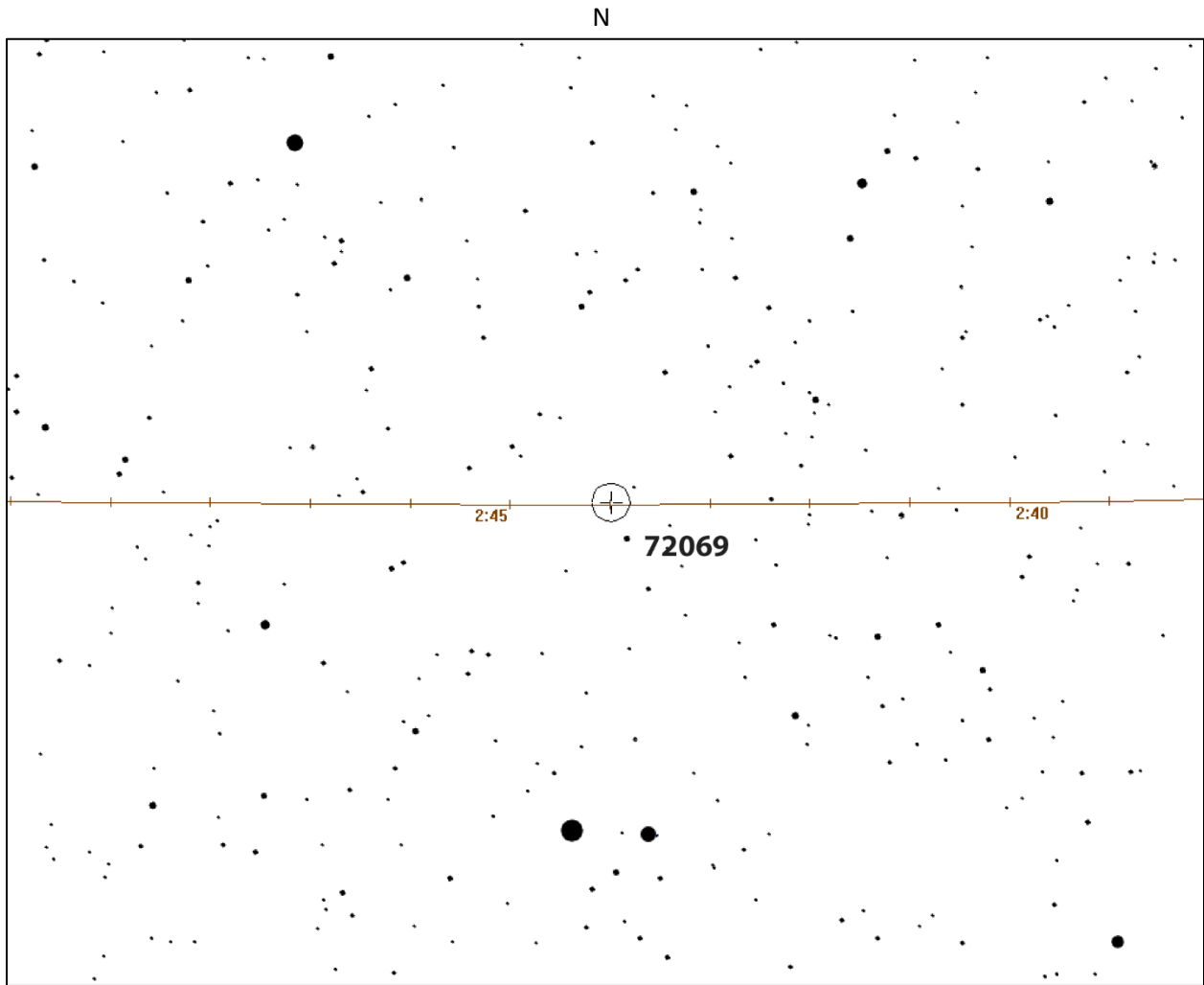


Chart 3 shows a prepointing excerpt for the location at 90W 41°19'44"N on September 12. This can be used on Sept 11 as is for all the Central time zone for the purpose of determining whether the observer equipment is able to record the event, is the chosen site suitable, and give the observer practice in finding targets similar to the star to be occulted by Interamnia.

For Chart 3 (SAO 73184) subtract 6h23m05s from the predicted time for the occultation by Interamnia to find the time SAO 73184 will be at its closest to the prepoint line from your location.

